

Events

TERRA Innovation Series: Engineering Better Roads Through Dynamic Research Partnerships

July 30, 2008

10:00 a.m. to 3:30 p.m.

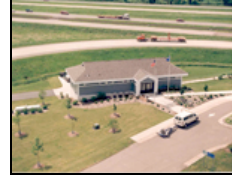
**MnROAD
9011 77th St. N.E.
Albertville, MN 55362**

[\[Map and Directions\]](#)

**TERRA Innovation Series:
Engineering Better Roads Through Dynamic
Research Partnerships**

MnROAD open house, project site tours, demonstrations, and topic forums

Get a behind-the-scenes look at how materials and pavement engineering innovations are developed, tested, and implemented on Minnesota roads at this one-of-a-kind, live transportation laboratory. Representatives from TERRA, Mn/DOT, local government, and industry will be on-hand to discuss TERRA-initiated research underway as part of the MnROAD Phase Two Research Initiative as well as the latest innovations in transportation engineering. A tour bus will run a continuous loop through the MnROAD facility, making stops at various project locations. Researchers will be at project sites to discuss details. Potential featured projects include full-depth reclamation, pervious pavement, fly ash, warm-mix asphalt, and whitetopping. Posters sessions and equipment demonstrations will share the latest innovations in the industry. In addition, forum discussions and presentations will focus on topics relevant to construction, local government, and researchers, consultants, and practitioners. Visitors may participate as their schedules allow, either for a brief stay or for the entire day. During lunch, which will be provided, various TERRA, Mn/DOT, and industry leaders will speak and a TERRA appreciation award will be presented.



Registration and More Information

To register, please contact Stephanie Malinoff, malinoff@cts.umn.edu, 612-624-8398. For more information, please visit the [TERRA Web site](#).

Cost

There is no cost to attend this event but registration is required.

Program

- 10:00 a.m.** Registration
- 10:30** Morning Session
- Tours and Demos
 - Concurrent Topic Forums
 - Construction
 - Local Government
 - Researchers, Consultants, and Practitioners
 - Project Posters
- 12:00** Lunch and Presentations
- 1:30 p.m.** Afternoon Session
- Tours and Demos
 - Concurrent Topic Forums
 - Construction
 - Local Government
 - Researchers, Consultants, and Practitioners
 - Project Posters
- 3:00** Adjourn

Note: A final determination of projects featured during the tour will be made just prior to the event based on construction schedules. Please visit the MnROAD Web site for [construction updates](#).

Location

The program will be held at MnROAD, 9011 77th St. N.E., Albertville, MN 55362. View [directions to MnROAD](#). (Please note that other online mapping tools have provided inaccurate directions.)

Registration and More Information

There is no cost to attend but registration is required. A [complete program with event details](#) is online. To register or to request disability accommodations, please contact Stephanie Malinoff, malinoff@cts.umn.edu, 612-624-8398.

About the TERRA Innovation Series

This is the second event in the TERRA Innovation Series, which features transportation engineering and road research. The TERRA Innovation Series communicates TERRA activities, innovations, and products through knowledge transfer, exchange, and demonstration. These transportation engineering and road research events have a technical focus and address research results, trends that affect or improve productivity, innovative partnering and contracting models, and hot topics that may lead to new research related to TERRA priorities.